

# WCB Announces Premium Rates for 2016

On December 2, 2015, the Saskatchewan Workers' Compensation Board announced the premium rates for 2016. The changes in rates for Building Construction code members from 2015 to 2016 are as follows:

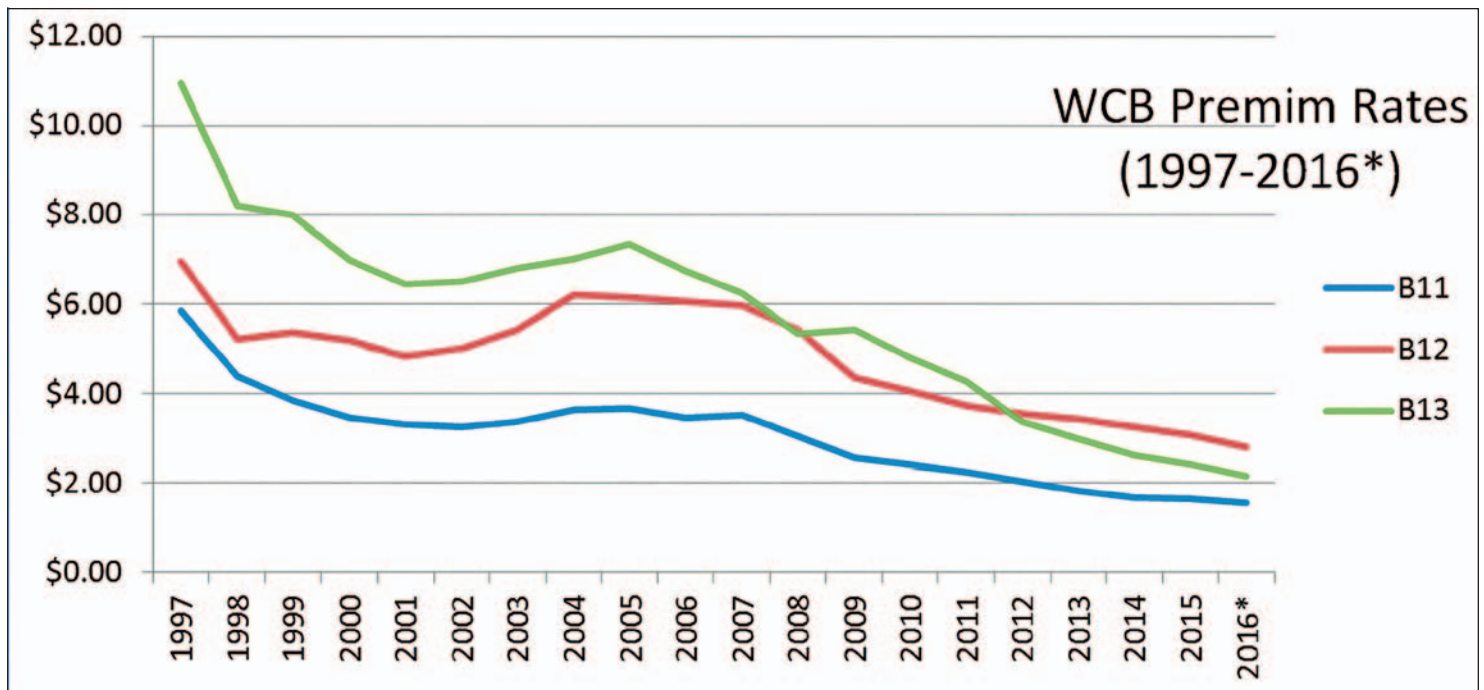
Rate Code	Industry	2015 Premium Rate	2016 Premium Rate	Change from 2015 to 2016
B-11	Construction Trades	\$1.63	\$1.57	- 3.7%
B-12	Residential Construction	\$3.09	\$2.82	- 8.7%
B-13	Commercial/Industrial Construction	\$2.43	\$2.15	-11.5%

*Effective rate per \$100 assessable payroll*

Continuous improvements in safety has a major impact on premiums, both in the short and long term. The SCSA would like to thank and congratulate all of the safety leaders that have made a concerted effort to improve safety in their workplaces and communities; including the SCSA Board of Directors for their leadership, and the SCSA staff, for their efforts to support the goal of reducing costly injuries in our province.

## Did you know?

WCB data indicates that COR™ companies have fewer time-loss injuries than the rest of the industry. A COR certified company can experience reduced financial costs associated with accidents, including WCB premiums, which can affect a company's bottom line. A good safety record can enhance your reputation in the industry!



*\*Projected*

For more information on WCB premium rates, visit: [www.wcbask.com/employers/rate-setting](http://www.wcbask.com/employers/rate-setting)